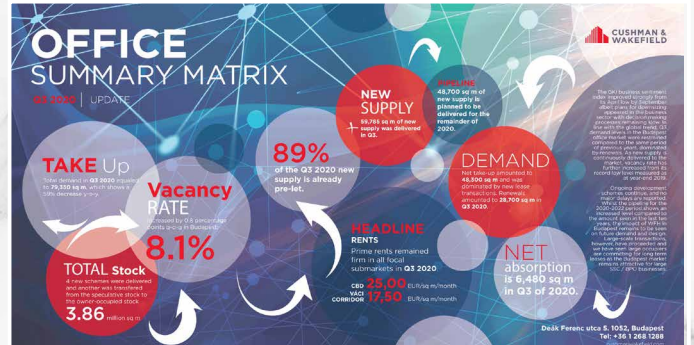
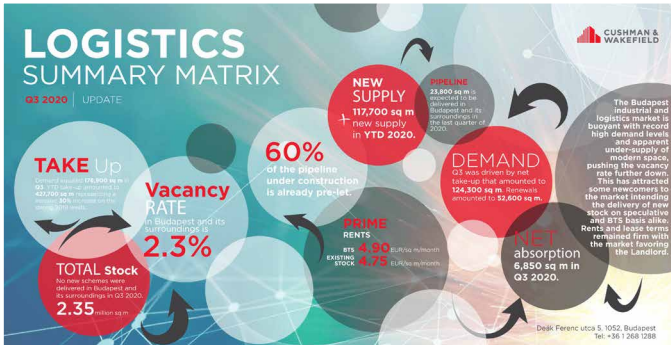


# Highlights from October 2020 NEWSLETTER



## LANDLORD REPRESENTATION

OUR RETAIL TEAM LEASED 1,642 SQ M TO ALDI AND ROSSMANN IN MARCALLI, REPRESENTING REVETAS.

Diána Bencsik  
Negotiator  
Budapest, Hungary

CUSHMAN & WAKEFIELD

## LANDLORD REPRESENTATION

4,700 SQ M EXPANSION IN JT ROSS PARK AEROZONE.

Tamás Budai  
Senior Negotiator, Industrial Agency  
Budapest, Hungary

CUSHMAN & WAKEFIELD

## WE ARE HIRING

JOIN US AS A JUNIOR PROPERTY MANAGER

Send your CV to [hungaryjobs@eurcushwake.com](mailto:hungaryjobs@eurcushwake.com)

BUDAPEST, HUNGARY

CUSHMAN & WAKEFIELD

## AVAILABLE SPACE

FROM Q4 2021 - Q1 2022 IN ATENOR'S ROSEVILLE OFFICE DEVELOPMENT.

Further information and leasing:  
Angéla Jójárt  
Negotiator, Office Agency  
[angela.jojart@cushwake.com](mailto:angela.jojart@cushwake.com)

Krisztina Enzösi  
Associate, Office Agency  
[krisztina.enzosi@cushwake.com](mailto:krisztina.enzosi@cushwake.com)

Budapest, Hungary

CUSHMAN & WAKEFIELD

## EXCLUSIVE MANDATE

FOR THE MARKETING OF 3,500 SQ M EXISTING AND 14,000 SQ M DEVELOPMENT POTENTIAL AT VGP PARK KECSKEMÉT, HUNGARY.

Tomaj Boda  
Senior Negotiator, Industrial Agency

Tamás Budai  
Negotiator, Industrial Agency

CUSHMAN & WAKEFIELD

## NO.1 IN HUNGARY

With 24,000 sq m space transacted, 16 deals closed and 67% market share of the total agent's market, our office agency team is market leader in Budapest in Q3 2020.

67% MARKET SHARE

TAMARA SZANTÓ  
Krisztina Enzösi  
DÓRA BUDAI  
Anna Szabó  
ANIELA JÓJÁRT  
Anna Szabó  
BETTINA BEKE  
MARIETTA HÁRCSÓ

CUSHMAN & WAKEFIELD